

Science Ch. A4 Test

- _____ is the process plants use to make their food.
 - photosynthesis
 - cotyledon
 - cellular respiration
 - fertilization
- Growing toward the light is an example of _____.
 - phototropism
 - gravitropism
 - vegetative propagation
 - seedlings
- There may be many ovules in a flower's _____.
 - pistil
 - stamens
 - stigma
 - ovary
- Planting a potato tuber with an "eye" is a form of _____.
 - cellular respiration
 - vegetative propagation
 - fertilization
 - tropism
- The male reproductive parts of a flower are the _____.
 - pistil
 - ovary
 - stamens
 - epidermis
- A seed will not _____ unless it has enough water.
 - embryo
 - germinate
 - pistil
 - epidermis
- An embryo plant whose root and stem have started growing is called a _____.
 - tissue culture
 - seedling
 - embryo
 - cotyledon
- A plant's response to a stimulus is called _____.
 - vegetative propagation
 - grafting
 - tropism
 - fertilization
- The joining of an egg and a sperm cell is called _____.
 - fertilization
 - tissue culture
 - tropism
 - cellular respiration

10. The _____ is the part of the seed that will become the plant.

- a palisade layer
- b pistil
- c embryo
- d seed coat

11. Most photosynthesis takes place in the _____ of cells.

- a stamens
- b cotyledons
- c palisade layer
- d petals

12. Making stems from two different plants grow together is called _____.

- a vegetative propagation
- b tropism
- c tissue culture
- d grafting

13. The _____ is the female reproductive part of a flower.

- a stamen
- b anther
- c ovary
- d embryo

14. _____ contain food that helps an embryo plant grow.

- a seedlings
- b tissue cultures
- c pollen
- d cotyledons

15. _____ causes roots to grow down.

- a phototropism
- b gravitropism
- c hydrotropism
- d audiotropism

16. The process by which organisms release energy stored in food is _____.

- a photosynthesis
- b phototropism
- c photography
- d phototelekinesis

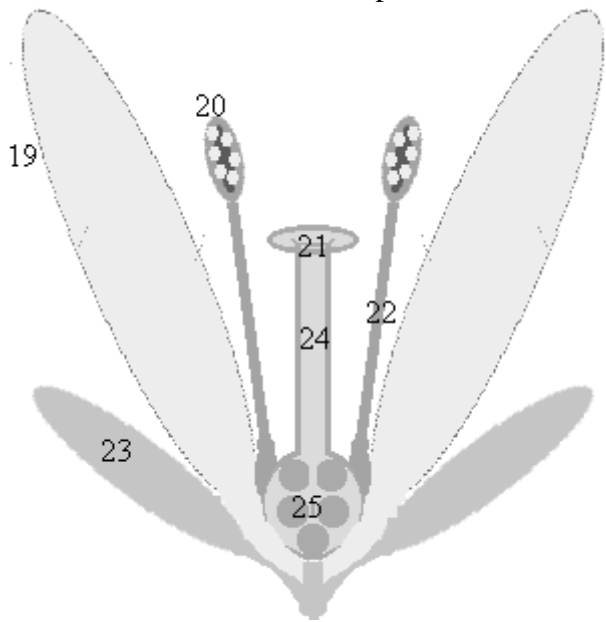
17. Growing new plants from plant tissues is called _____.

- a photosynthesis
- b grafting
- c tissue culture
- d vegetative propagation

18. The upper layer of cells in a leaf is the _____.

- a palisade layer
- b epidermis
- c guard cells
- d stomata

For numbers 19-25, label the parts of the flower.



- a style
- b stamen
- c anther
- d petal
- ab sepal
- ac ovary
- ad stigma

26. Phototropism changes the growth of cells in the plant's _____.

- a roots
- b leaves
- c stem
- d flowers

27. The ovary is part of a flower's _____.

- a stamens
- b pistil
- c style
- d sepals

28. Nectaries and colorful petals attract insects and other animals that help in _____.

- a pollination
- b germination
- c grafting
- d dispersal

29. Embryo plants grow by using the food stored in _____.

- a tubers
- b stems
- c cotyledons
- d seed coats

30. In order to germinate, seeds have to absorb _____.

- a carbon dioxide
- b water
- c nectar
- d starch

31. Which of these is NOT a type of vegetative propagation?

- a producing runners
- b growth from cuttings
- c grafting
- d cross-pollination

32. On what flower part must pollen land for fertilization to occur?

- a stigma
- b ovule
- c style
- d anther

33. The cells that open and close to allow carbon dioxide to enter the leaf are _____.

- a guard cells
- b palisade cells
- c spongy cells
- d chlorophyll

34. The openings formed by guard cells are called _____.

- a epidermis
- b stomata
- c filaments
- d chloroplasts

35. Male reproductive cells are carried in _____.

- a ovaries
- b ovules
- c pollen
- d stamen

36. Iodine makes starch turn _____.

- a green
- b yellow
- c red
- d black

37. What do dandelions use to disperse seeds?

- a bird droppings
- b thorns
- c the wind
- d rivers

38. The part of a seed that protects it is called the _____.

- a embryo
- b cotyledon
- c seed coat
- d palisade layer

39. The first part to emerge from a germinating seed is the _____.

- a stem
- b leaf
- c flower
- d root

40. Because a lima bean has two cotyledons, it is a _____.

- a monocot
- b dicot
- c tricot
- d quadrocot